



72V Series Waterproof Charger

—AC 220Vac



IP65 waterproof



PFC \geq 0.98



Overvoltage
protection



Over temperature
protection



Short circuit
protection

1. Product Color

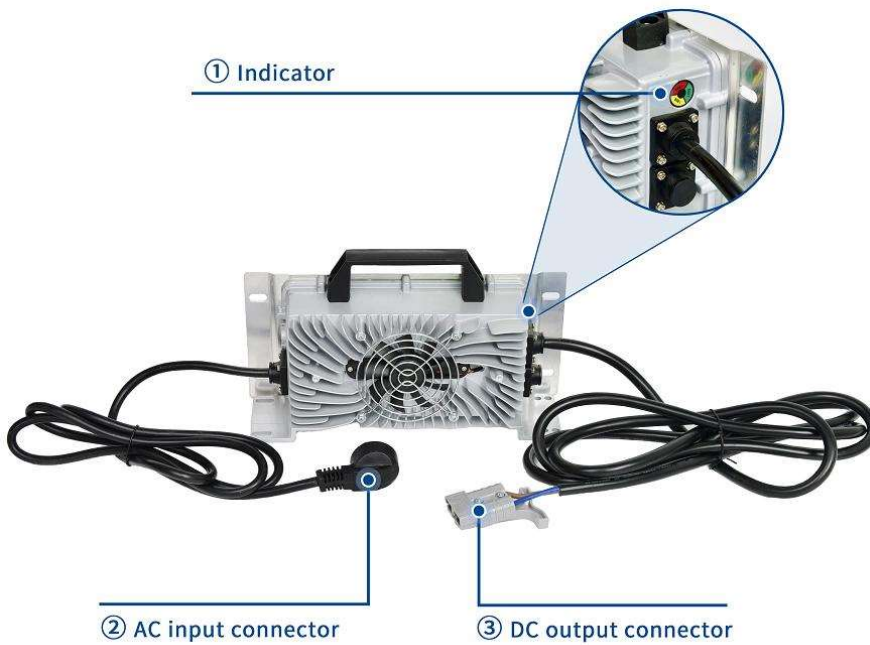


Silver



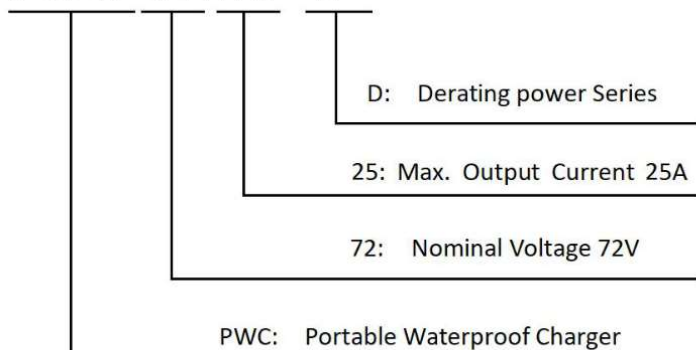
Blue

2. Wires instruction



3. Model Encoding

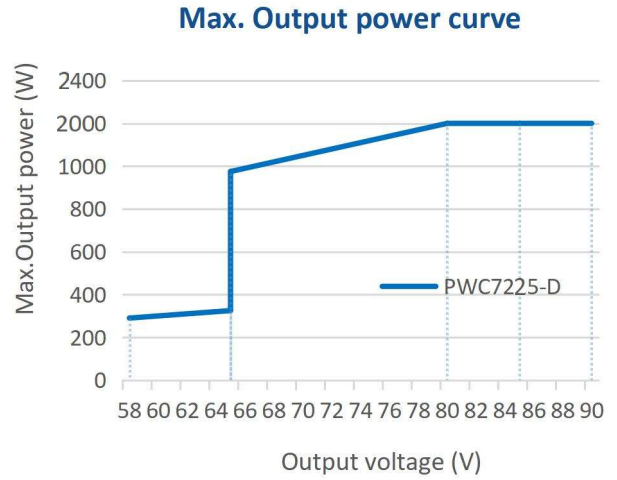
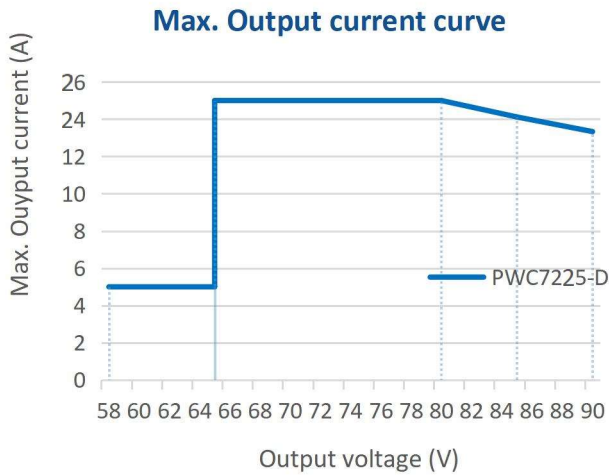
P W C 7 2 2 5 - D



4. Technology Parameter

Battery type		Lead acid/Lithium Battery
Model number		PWC7225-D
Input	Voltage range	90~264VAC
	Frequency range	45~65Hz
	Input current(Typ.)	6A/220VAC
	Power Factor(Typ.)	≥0.98 (Tested when the power is above half power)
	Inrush current(Typ.)	Cold start 50A at 220VAC
	Max. Efficiency(Typ.)	93%(220V); 91%(110V)
	Leakage current	<0.5mA/220VAC (60335-1/2-29), 1.5mA Peak/240VAC (62368-1)
Output	Charging phase	Pre-charge + constant current + constant voltage
	Max. output power	2000W@220VAC 1000W@110VAC
	Max. output Voltage	50~84.0V(LiFePO4 in 23 Series)/ 50~84.0V(NMC in 20 series)
	Max. output current	25A@220VAC 12A@110VAC
	Constant voltage	84.0V(LiFePO4 in 23 Series)/ 84.0V(NMC in 20 series)
	Max. current ripple	500mA _{p-p}
	Static power	<8W
Protection	Short circuit	Yes
	Over temperature	Yes
Function	Indicator light	Yes
Environment	Cooling	Fan cooling
	Waterproof	IP65
	Working Temp.	-20~50℃
	Working humidity	10%~95% RH non-condensing
	Storage temp., humidity	-40~80℃, 10%~90% RH non-condensing
	Vibration resistant	10~500HZ, 2G 10 minutes/cycle, X, Y, Z axis each 60 minutes
SAFETY & EMC	Safety standards	EN60335, GB/T4706
	Withstand voltage	I/P-O/P: 3KVAC I/P-FG: 2KVAC O/P-FG: 0.5KVAC
	Isolation resistance	I/P-O/P, I/P-FG, O/P-FG: 100M ohms/500VDC/25℃/70%RH
	EMC emission	EN55022 Class A, GB/T 9254 Class A
	EMC immunity	EN 55024:2010, GB/T17618
Indicator state	Yellow indicator	Steady on: almost full; 0.5S cycle flashing: initial power-on
	Green indicator	Steady on: fully charged 1S cycle flashing: battery not connected
	Red indicator	Steady on: charging 0.5S cycle flashing: the battery is reversed 1S period blinking: output overcurrent 2S period blinking: high battery voltage 3S period blinking: low battery voltage 4S period blinking: The Charger is overheated 5S cycle flashing: battery failure
Others	MTBF	>100K hours
	Weight	5.7kg
	Dimensions	330*190*150 mm

5. Charging curve



6. Optional Cable

AC Charger Plugs

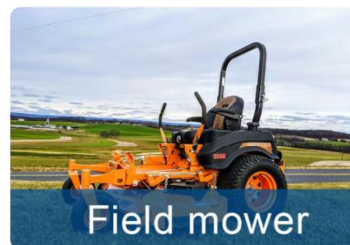


DC Charger Plugs

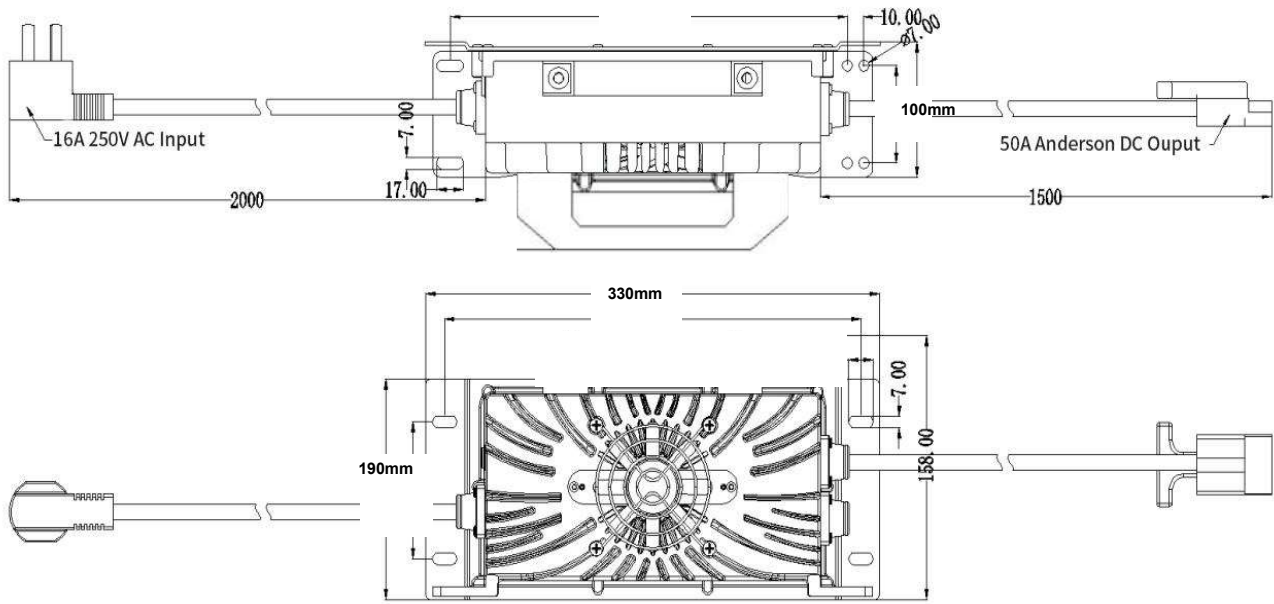


Note: standard cable length is 2m.

7. Application scenarios



8. Product Dimensions



(Unit: mm)



WATTA BATTERIES AND CHARGER
High Quality - Fully guaranteed Products

Local Distributer

